



# Electric Wall Cabinet

*Assembly & Installation*

# Thank You!

Thank you for purchasing a Stoll Electric Fireplace Cabinet! We are confident this quality product will last you for years to come. If you need further help or additional information regarding installation, please reach out to your local dealer for assistance.

## Included Parts & Tools

The following parts and tools are included

Wood screws: *10*

Self-tapping metal screws: *15*

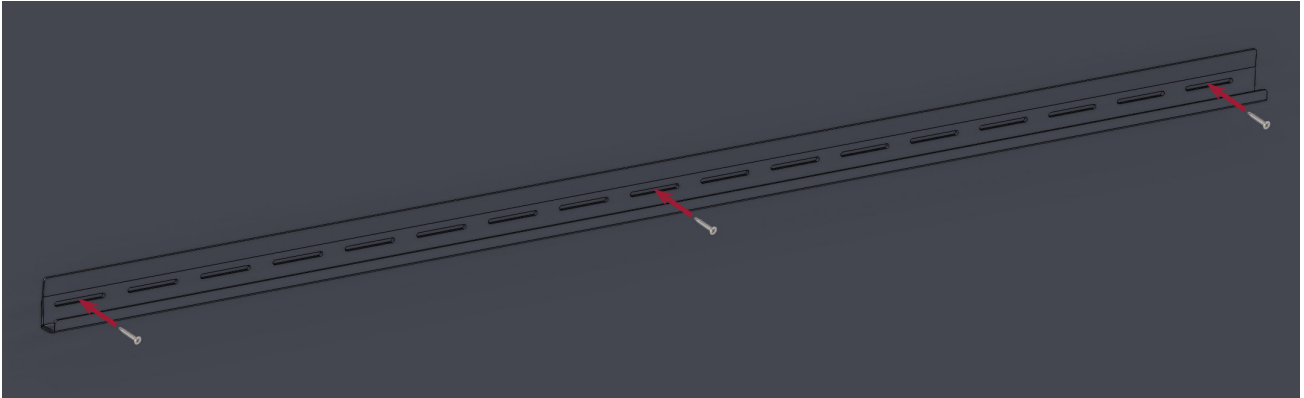
## Photos of Completed Products

We would love to see pictures of your finished and installed project! Please send images to [photos@stollindustries.com](mailto:photos@stollindustries.com). High quality images will likely be featured on our social media or website!



## Installation

1. Using the provided wood screws or appropriate fasteners, secure the “J” channel mounting flange to the wall. Position the top edge of the bracket 1/8” below the desired finished height of the cabinet. Ensure the bracket is level and fully secured.



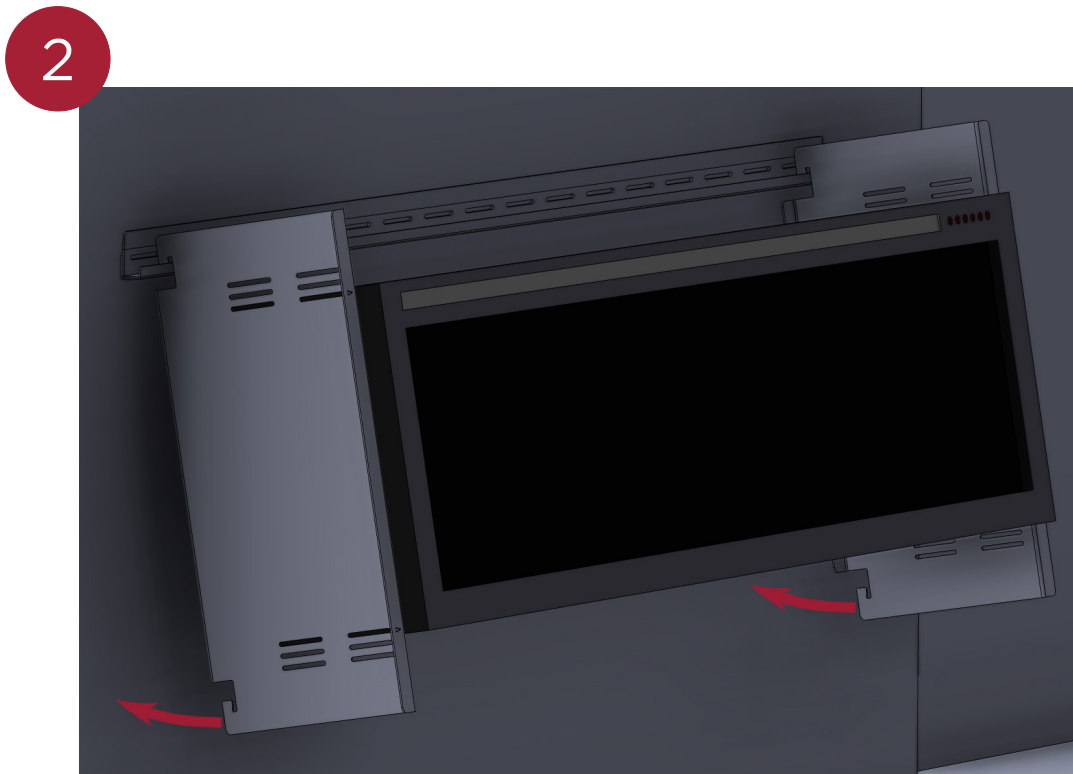
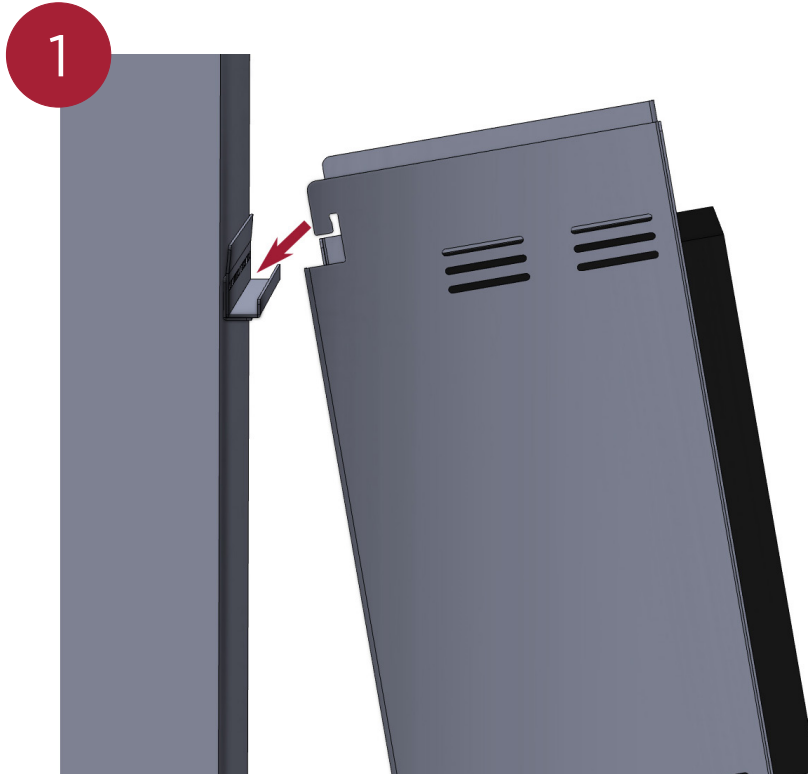
2. Using the provided 3/4” self-tapping screws, secure the fireplace support brackets to each end of your electric fireplace.

*Note: Triangle ID marks on the front of the support brackets determine the viewing area position of the metal cabinet. Place the brackets in the appropriate position vertically to align with the electric fireplace ventilation, viewing area, etc.*



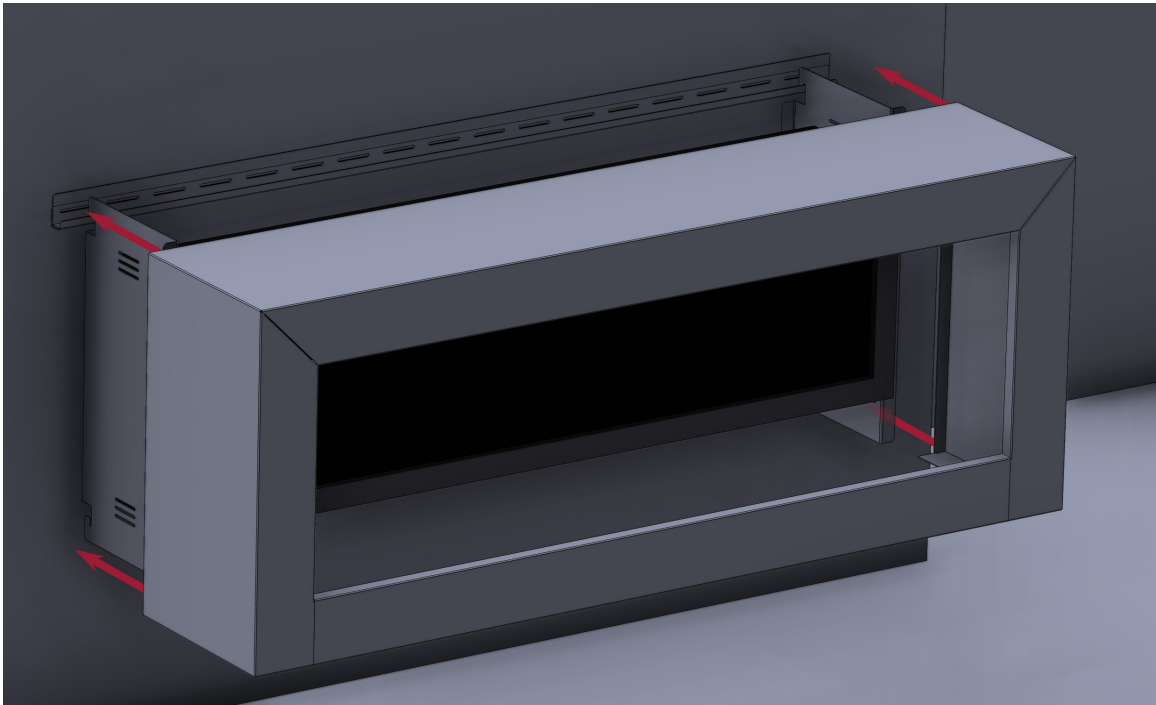
## Assembly

3. Install and center the electric fireplace onto the “J” channel mounting flange as shown. Loosen the self-tapping screws in the ends of the electric fireplace, and adjust the overall depth from the wall to the face of the electric fireplace to be exactly 1” less than the finished depth of the metal cabinet.

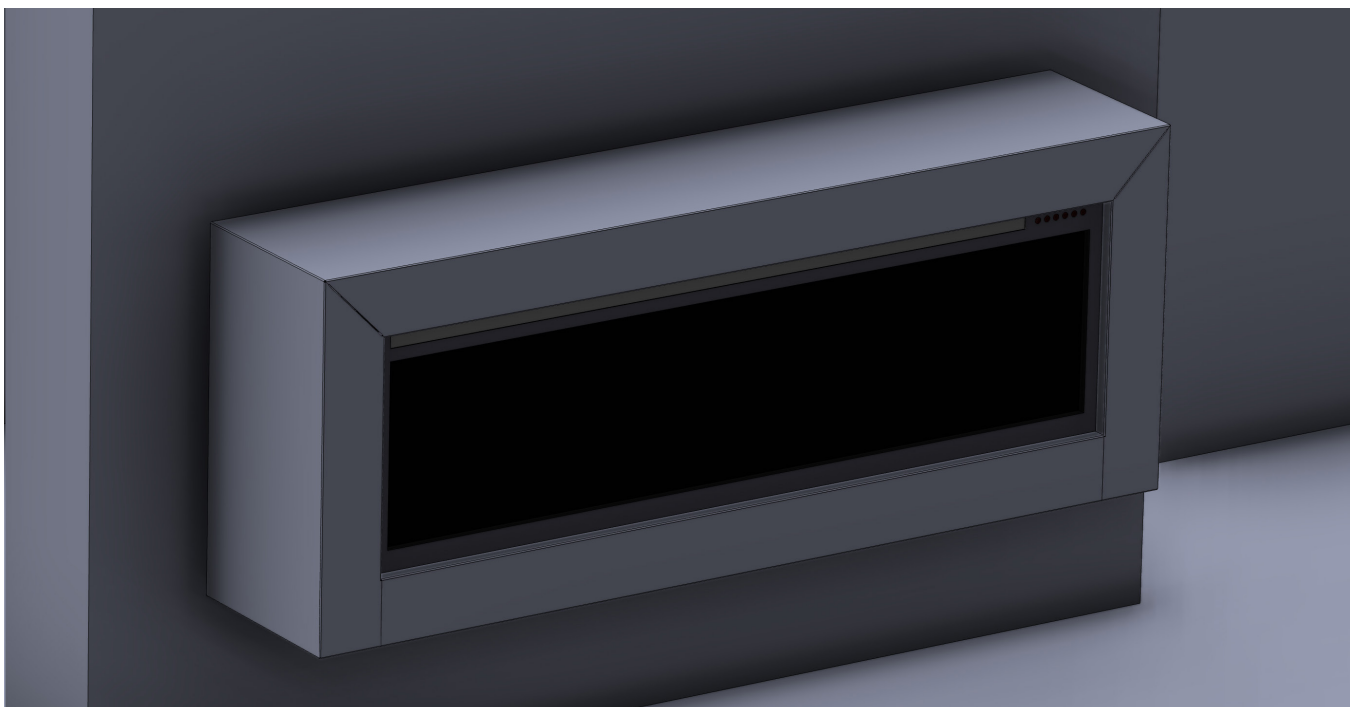


## Assembly Continued

4. Install and center the metal cabinet over the top edge of the “J” channel mounting flange as shown, and press down into position. Check inside depth, width, and height clearances of the metal cabinet and electric fireplace, and adjust as needed to achieve the desired finished fit.

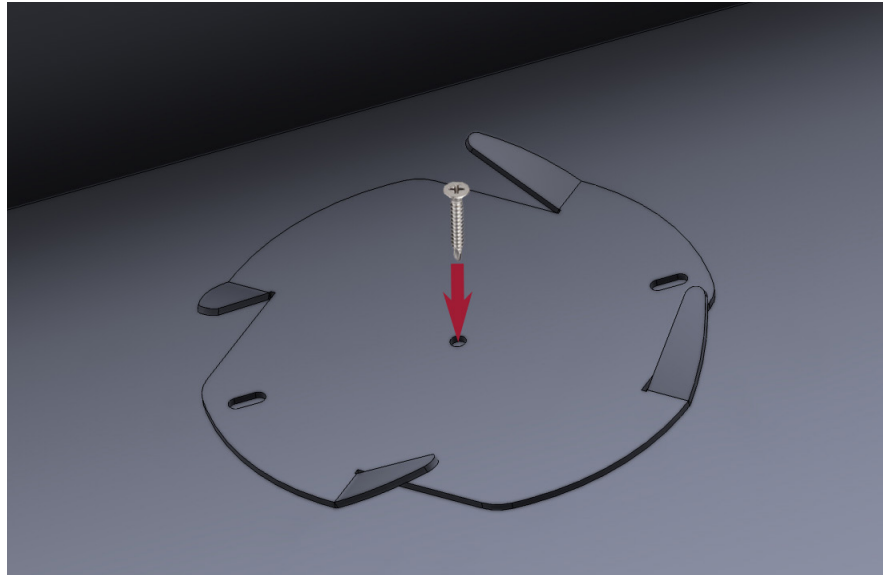


5. Follow the manufacturer's instructions for your specific fireplace to finish setup and prepare for the first use of your fireplace. If your cabinet includes a faux chimney pipe kit, proceed to the next page. If it does not include this kit, your installation is now complete.

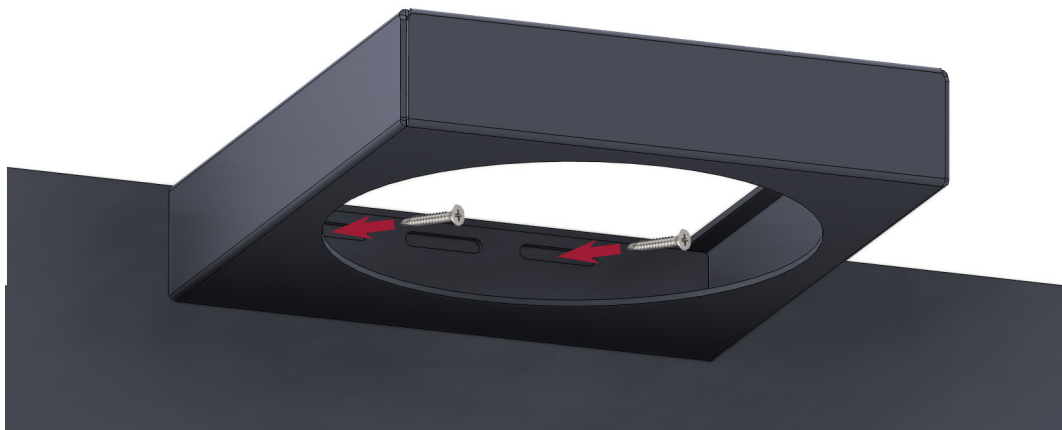


## Faux Pipe Installation

6. Locate and mark the center point of the metal cabinet, at 4 1/2" from the wall. Using a provided 3/4" self-tapping screw, attach the center point of the Bottom Pipe Adapter Bracket to the marked position on the top of the metal cabinet as shown.



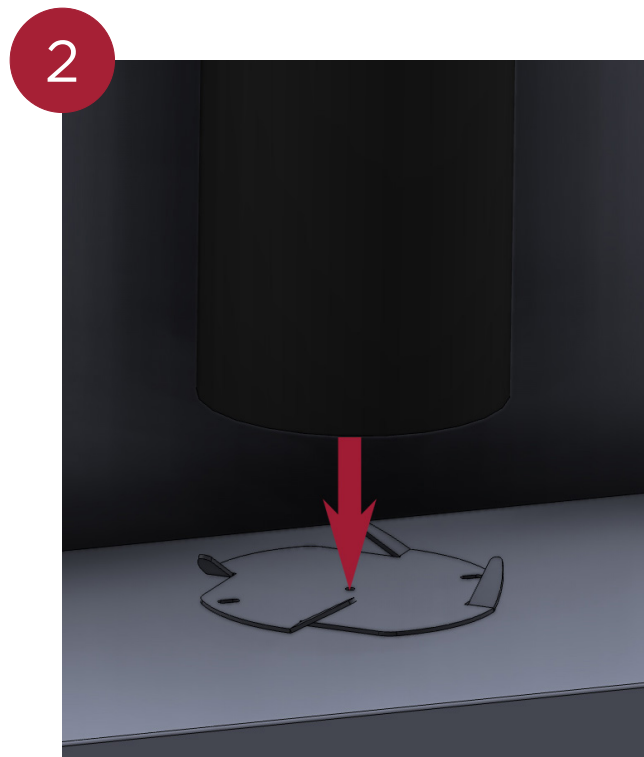
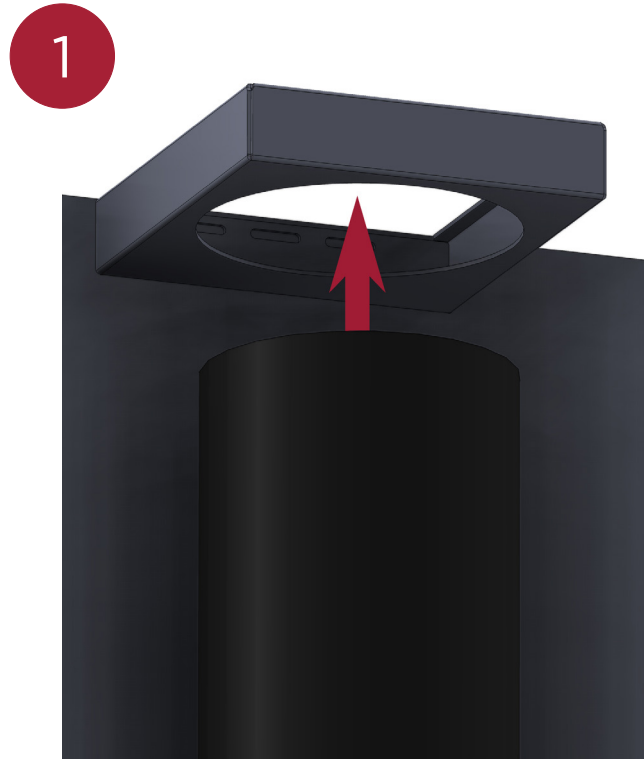
7. Using the provided wood screws or the appropriate fasteners, center and attach the top pipe adapter bracket to the wall and/or ceiling as shown.



## Pipe Installation Continued

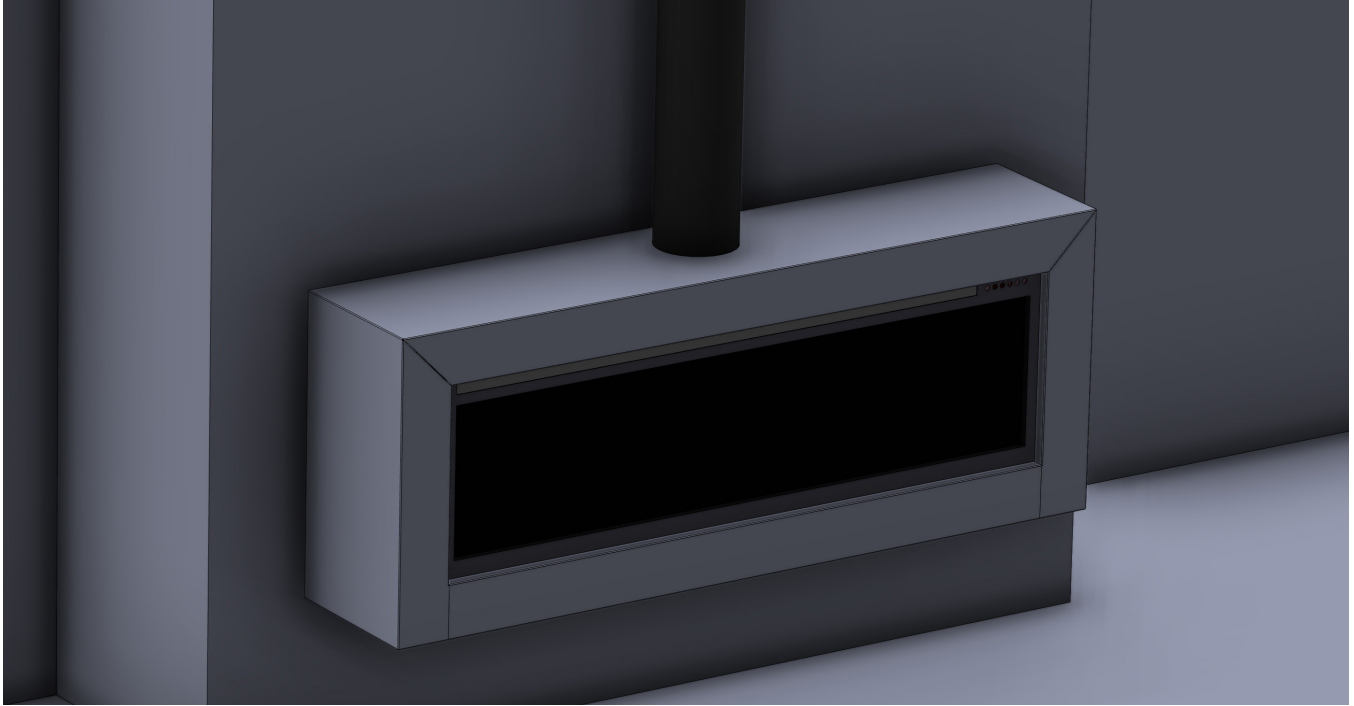
8. Measure the height between the top of the metal cabinet and the bottom edge of the top pipe adapter bracket, and add an additional 1/2" to the measurement. Mark and cut the fluted end of the pipe to your given measurement.

9. Insert the pipe into the top pipe adapter bracket, and then lower it into place over the bottom pipe adapter bracket as shown.



## Enjoy!

Your electric wall cabinet installation is finished and ready for use! Enjoy your new fireplace.



---

## Warranty

Your Stoll Products are covered by a 5 year limited warranty. For more information and to view the maintenance and cleaning guide, please visit [www.stollindustries.com/resources](http://www.stollindustries.com/resources). All warranty claims must be placed through your local dealer.

### **WARNING**

This product can expose you to chemicals including Carbon Black, which is known to the state of California to cause Cancer. For more information go to [www.P65Warnings.ca.gov](http://www.P65Warnings.ca.gov)