

# Toe Kick

## *Installation*

**Overview:**

This installation manual provides step-by-step instructions for installing and setting up your Stoll Faceframe and Door Assembly. Please follow the instructions in the order presented to help ensure a smooth and efficient setup.

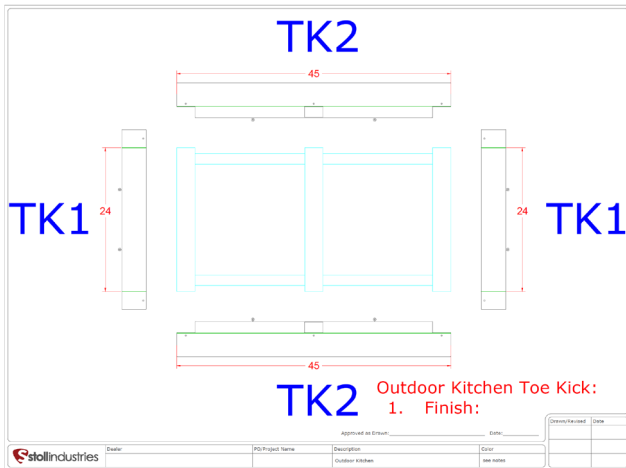
**Tools You Will Need:**

- Fasteners (*Selection should be based on your application*)
- Drill
- Circular saw or preferred cutting device
- Sheet metal cutting tool

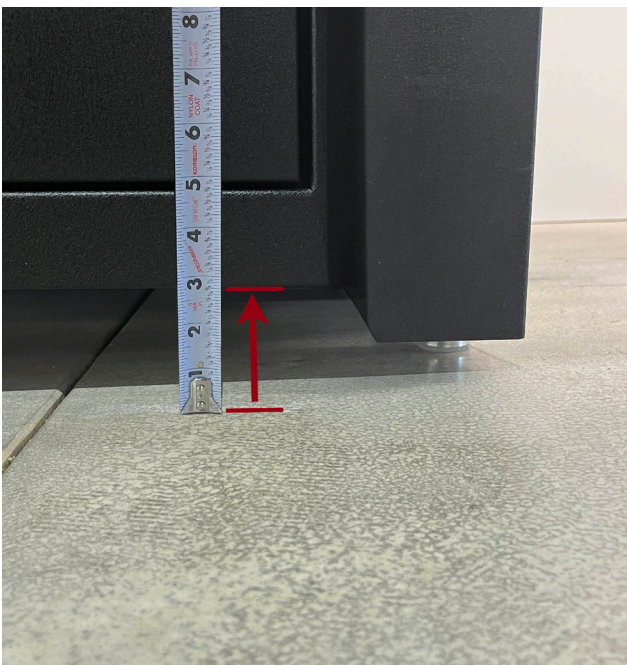


# Installation Instructions

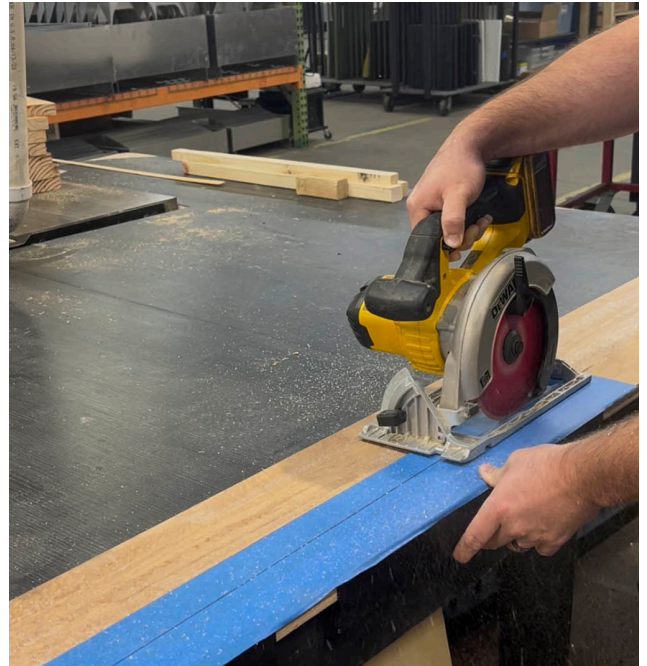
- Each toe kick section will be labeled to correspond with the provided layout drawing.
- Using a metal cutting tool, remove the temporary bracing pieces from each toe kick.
- *It is recommended to cut the bracing at an angle, as shown, to prevent sharp or protruding edges that could scratch the finish of the outdoor kitchen verticals.*



- Toe kicks are manufactured at a 4" height and are designed to be trimmed at the time of installation. To determine how much material needs to be removed, first ensure the kitchen is fully level. Then, at each vertical, measure the distance from the face panel lip to the patio and trim the toe kick accordingly.
- *To preserve the finish, it is recommended that a layer of masking tape be applied to the finished face of the toe kick.*
- Ensure the mounting holes on all toe kicks remain at the top when determining the cut line. Transfer and mark each measurement to the corresponding toe kick section.



- Using a straight edge, connect the marked points to create a cutting guideline.
- Using a cutting disk suitable for metal, carefully cut along the marked guideline on each toe kick section.



- Remove the masking tape from the face of the toe kicks. Place all of the end pieces on first. The front and back pieces should overlap the returns on the end pieces.
- Using the provided screws, fasten the toe kicks to the outdoor kitchen verticals through the mounting holes, as shown. Repeat this process until all toe kicks are installed.





## Operation & Maintenance

- Your cabinets can be cleaned using a damp cloth and soap or mild household cleaner. *To avoid damage to the finish, abrasive cleaning products and cleaners containing ammonia or other harsh chemicals should be avoided.*

## Warranty

Your cabinets are covered by a 7 year limited warranty. For more information, please visit [www.stollindustries.com/resources](http://www.stollindustries.com/resources). All warranty claims must be placed through your local dealer.

## Photos of Completed Products

We would love to see pictures of your finished and installed project! Please send images to [photos@stollindustries.com](mailto:photos@stollindustries.com). High quality images will likely be featured on our social media or website!

### **WARNING**

This product can expose you to chemicals including Carbon Black, which is known to the state of California to cause Cancer. For more information go to [www.P65Warnings.ca.gov](http://www.P65Warnings.ca.gov)