

## Hood Features:

- Create a gentle or dramatic slope with the sweeping concave curvature of this hood
- Custom built to your specifications

## Details

- 14ga steel
- If a fan/hood liner is desired, please send us the make, model, and spec sheet for your liner.



ST1400 range hood

## Frame Materials

- Steel ✓
- Stainless Steel ✓

## Additional Options

- Vent Chase (ST1410) ✓
- Hood Liner (Fan) may be provided by customer ✓

## Banding & Accents

- None(default) ✓
- Flat Banding ✓
- Forged Banding ✓
- Aged Banding ✓
- Old World Accents ✓
- Transitional Accents ✓

## Additional Info:

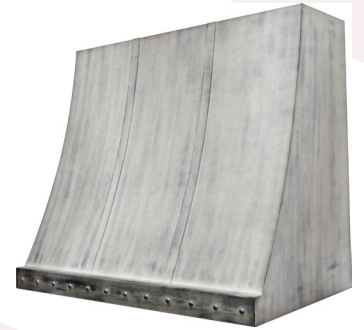
- None(default) ✓
- Modern Rivets ✓
- Rustic Rivets ✓

## Banding Details

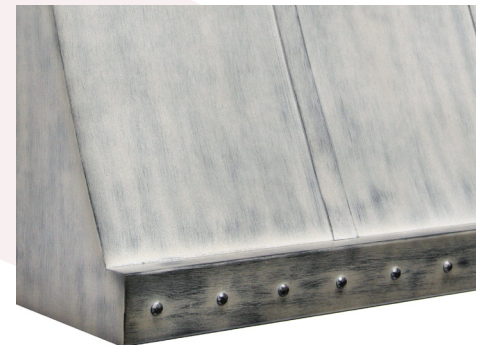
- Banding available as vertical or horizontal
- Available in 1", 1.25", 1.5", & 2" width
- Priced per Band/Accent

## Rivet Details

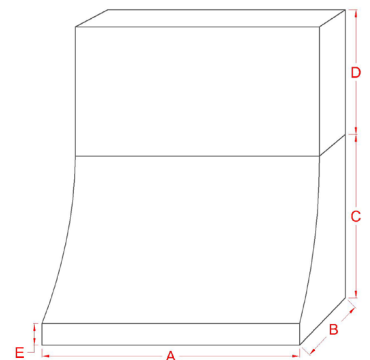
- Size not adjustable
- Priced per rivet



Antique White w/ Banding & Rivets



Accent Detail



Shown with optional vent chase

## Finishes

The following finishes are available for the ST1400 Range Hood.

### Standard Finishes

Matte Black	✓
Textured Black	✓
Bronzed Iron	✓
Oil Rubbed Bronze	✓
Charcoal	✓
Aspire Rust	✓
Weathered Brown	✓
Champagne	✓
Copper Vein	✓
Silver Vein	✓
Silver Mist	✓
Clear Natural	✓
Forged/Aged banding only	

### Premium Finishes\*

Antique Black	✓
only available for frame and flat banding	
Antique Steel	✓
only available for frame and flat banding	
Antique Red	✓
Antique Grey	✓
Antique Bronze	✓
Antique White	✓
Burnished Bronze	✓
Burnished Copper	✓
Burnished Silver	✓
Metallic Latte	✓
Rust Patina	✓
Hot Roll Natural	✓
Industrial Black	✓

### Solid Finishes\*

Aged Copper	✓
only available for flat banding	
Aged Brass	✓
only available for flat banding	
Newport Brass	✓
only available for flat banding and modern rivets	
Brushed Stainless	✓
only available for frame and flat banding	
Polished Stainless	✓
only available for flat banding and modern rivets	
Polished Nickel	✓
only available for flat banding and modern rivets	